



Collecting migration statistics using surveys

Haoyi Chen

United Nations Statistics
Division

Why collecting data on migrants through surveys?

More in-depth information that what can be collected through census or administrative sources

```
graph TD; A[More in-depth information that what can be collected through census or administrative sources] --> B[Can collect information about the migrant prior to migration]; B --> C[In-depth characteristics of the person/household]
```

Can collect information about the migrant prior to migration

In-depth characteristics of the person/household

Type of surveys

Inclusion in **multi-purpose (integrated) surveys** such as surveys on labour market, income & expenditure, health, living conditions, other social topics or multi-purposes

Surveys specifically developed to focus on migrants – **specialised migration surveys**

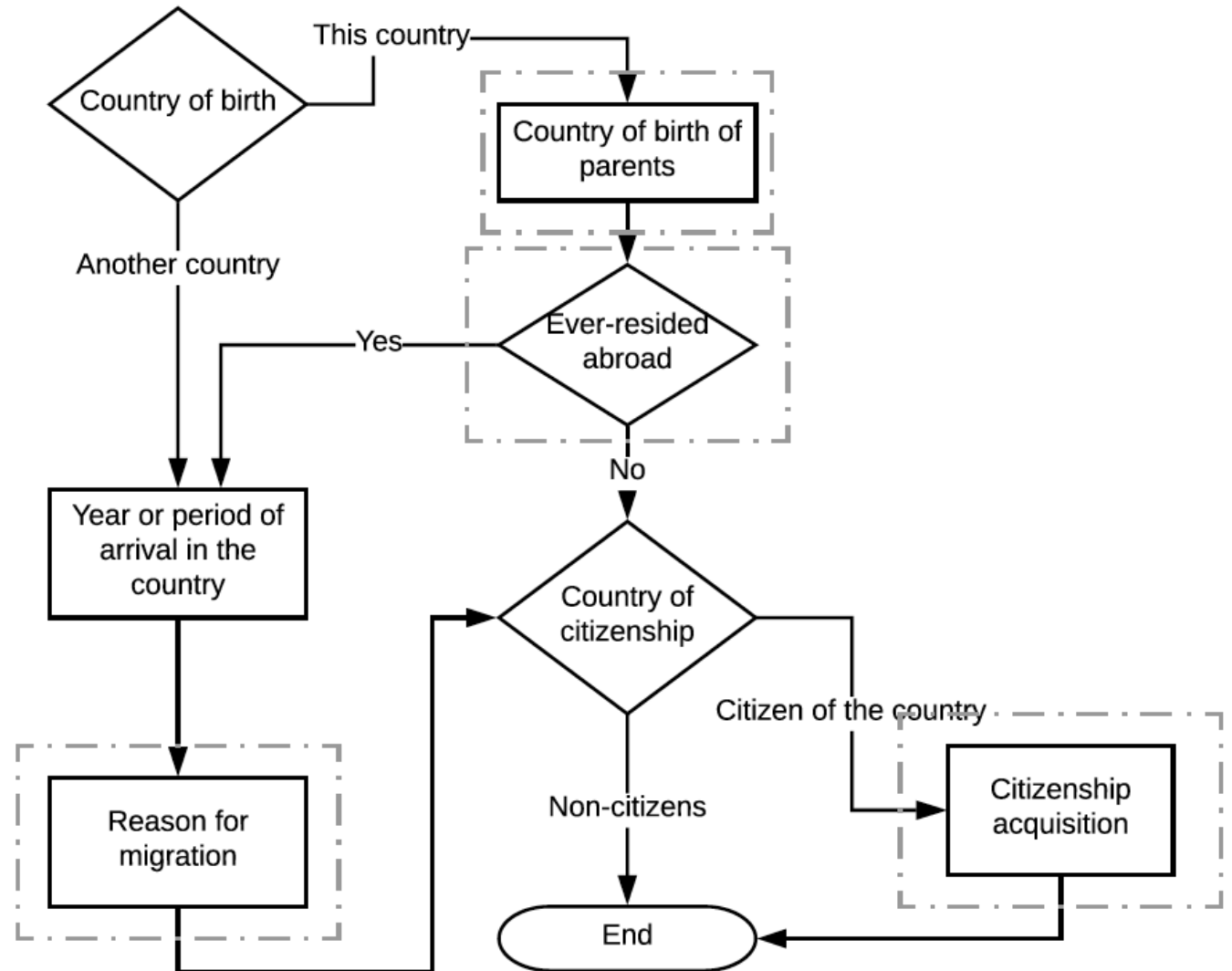
Key issues: cost, sampling frame and how much information is needed (policy concerns)

Specialised migration surveys

- Most suitable to inform about the migratory histories (the *why*, *when* and *how* of migration), the complete profiles, ways of life, attitudes as well as future the plans of individuals and households, i.e. the causes, modalities and impact of migration.
- Flexible, may focus on specific components or aspects of migration such as the immigration of foreigners or selected groups of them into the country, the emigration of nationals abroad, the return migration or the intention of people towards emigrating abroad, separately or at same time.
- Generally also focus on 'control groups' (e.g., non-migrants, non-migrant households).

Standard questions on international migrants

Annex 2. Proposed flow chart



Sampling issues – sampling

- What is the **size of the sample**, and its geographic distribution? (ideally a large general sample)
- What is the **prevalence and distribution of migrants** in the country?

- Sampling frame
- Stratify areas of a country according to prevalence of migrants
- Last stage (EA), listing households (with or without migrants), oversample households with migrants

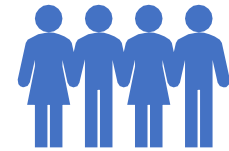


Table 3. Planned refresher PSUs by strata

Governorate	Strata											
	Low non-Jordanian households				High non-Jordanian households				Total			
	Urb.	Rur.	Camp	Tot.	Urb.	Rur.	Camp	Tot.	Urb.	Rur.	Cap	Tot.
Amman	9	1	0	10	39	2	0	41	48	3	0	51
Balqa	3	1	0	4	4	3	0	7	7	4	0	11
Zarqa	5	1	0	6	16	3	10	29	21	4	10	35
Madaba	2	1	0	3	3	2	0	5	5	3	0	8
Irbid	6	2	0	8	15	1	0	16	21	3	0	24
Mafraq	2	2	0	4	10	3	15	28	12	5	15	32
Jarash	2	1	0	3	9	2	0	11	11	3	0	14
Ajloun	1	1	0	2	0	1	0	1	1	2	0	3
Karak	2	1	0	3	0	1	0	1	2	2	0	4
Tafileh	1	1	0	2	0	1	0	1	1	2	0	3
Ma'an	1	1	0	2	0	1	0	1	1	2	0	3
Aqaba	2	1	0	3	7	2	0	9	9	3	0	12
Total PSUs	36	14	0	50	103	22	25	150	139	36	25	200
Total households												
	540	210	0	750	1545	330	375	2250	2085	540	375	3,000

Source: Correspondence with DoS